

ScreenBeam Central Management System (CMS)

Centrally Manage Receivers

ScreenBeam CMS lets users easily manage ScreenBeam receivers distributed throughout multiple conference rooms, classrooms, buildings, and locations with remote access of receivers located within the network. From a central location, users monitor receiver status, apply security policies, troubleshoot problems, perform a reset, update receivers, and more.

The CMS software is included with ScreenBeam commercial receivers and is only available from ScreenBeam. CMS dramatically reduces the cost of deploying and managing wireless display technology and supports any size deployment.

Centrally Configure the Receivers

Whether receivers are managed as a group or individually, the CMS console gives IT full access to remotely manage or change settings. When a problem is reported, CMS virtually eliminates the need to visit the location, ensuring that the wireless display stays up and running across your organization. For example, users can set a device's power management features, change a PIN, reboot a single receiver or group of receivers, or restore a receiver to factory settings—on any device in the group, all from one central location.

Group Receivers by Location

With CMS, IT administrators can organize ScreenBeam receivers in groups to streamline management to best meet the needs of their organization. Group ScreenBeam receivers located in buildings, departments, classrooms, or conference rooms, then apply policies, change settings, and update firmware for all devices. Or easily drill down to manage a single receiver.

Keep Receiver Firmware Up to Date with Remote Updates

It's hard for IT staff to personally visit each location to install a firmware or feature update. With ScreenBeam CMS, IT personnel can see the hardware and firmware level of every device in the deployment, and can update the firmware on one or all receivers remotely.



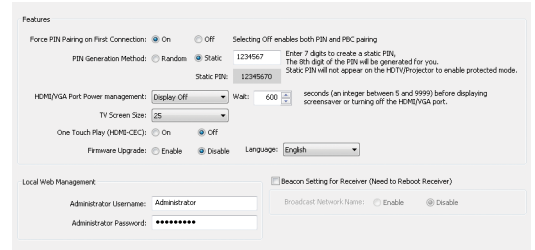
CATALOG NUMBER
ScreenBeam CMS
Perpetual License is included with
ScreenBeam Wireless Display Receivers

Advantages

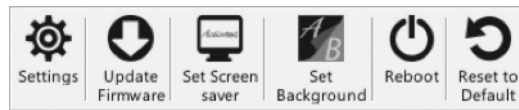
- ✓ Centrally manage ScreenBeam receivers for any size deployment
- ✓ Configure policy and security settings to fit your environment
- ✓ Schedule firmware updates and push policy settings as needed
- ✓ Remotely monitor ScreenBeam status and log events
- ✓ Enable IT help desk to remotely support users

Assign Policies from One Screen

ScreenBeam CMS puts all settings in one central location. That means users can customize the secured connection type, PIN preference, AV power management setting, or RF transmission power adjustment. Users may also set a policy for a single receiver, a designated group, or all receivers at once.



Customize the Screensaver and Background Image

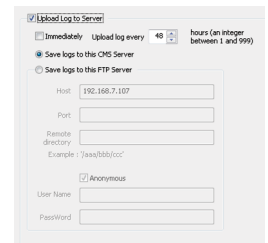


To enhance the overall wireless display experience, ScreenBeam CMS enables IT to remotely customize the

screensaver and background image of ScreenBeam receivers. For example, you can show your school's logo as the screensaver and use a photo of the school campus for the background image.

Capture Logs to Track Changes

By default, ScreenBeam logs are saved within the receiver. CMS can run immediate or scheduled reports on firmware updates, reboots, and the status of each receiver's connection to a mobile device. Users can save log reports to a CMS server or FTP server, then view the reports and make adjustments to the receivers if needed.



See the Status of Each Receiver on One Screen

The Group Pane is the main interface of the CMS, providing an at-a-glance view for the status and key information of all connected ScreenBeam receivers.

Instantly know which receivers are busy, idle, or offline.

Easily identify which receivers need a firmware upgrade.

Review the most recent activity performed on each receiver to ensure, for example, that a recent upgrade was successful.

Settings
Update Firmware
Set Screen saver
Set Background
Reboot
Reset to Default

Execute Policy

Receiver Group	Receiver Name	Receiver Status	Receiver MAC	IP Address	Model Name	Hardware Version	Firmware Version	Note
Kennedy Middle School	Jones Room 10	Online: Idle	109F-A9FE-B959	192.168.254.16	SBWD1100	1.2.2.0	1.9.0.51	Upgrade successful. Receiver Reboots now.
	Taylor Room 20	Online: Idle	109F-A9FE-08C1	192.168.254.14	SBWD1100	1.2.2.0	1.9.0.50	Reboot OK
Lincoln High School	Heddings Room 201	Online: Idle	109F-A9FE-0C0F	192.168.254.15	SBWD1100	1.2.2.0	1.9.0.50	Config successfully
	Manning Room 218	Online: Busy	109F-A9FE-C45D	192.168.254.3	SBWD1100	1.2.2.0	2.9.0.50	Config successfully
Ungrouped Receivers	Sherman Room 125	Offline	109F-A9FE-C4A9	192.168.254.19	SBWD1100	1.2.2.0	2.9.0.50	

Total Receivers: 5
Online Receivers: 4
Offline Receivers: 1

Keep tabs on the total number of online and offline receivers on the network

Quickly find grouped or ungrouped receivers.

Keep tabs on the total number of online and offline receivers on the network

Instantly know which receivers are busy, idle, or offline.

Easily identify which receivers need a firmware upgrade.

Review the most recent activity performed on each receiver to ensure, for example, that a recent upgrade was successful.

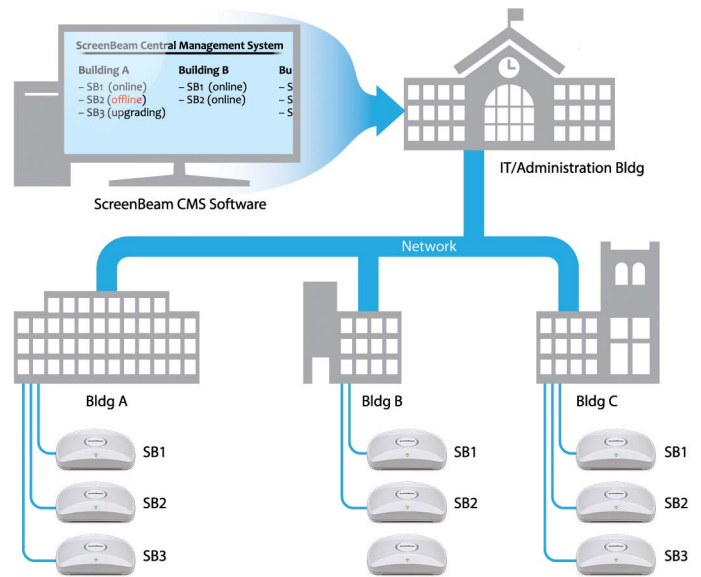
Quickly find grouped or ungrouped receivers.

How Does it Work?

ScreenBeam CMS gives users the flexibility to choose the best way to connect ScreenBeam receivers to the console:

- **DNS Discovery** allows ScreenBeam receivers to discover and connect with the CMS, if they are not on the same local network
- **USB Configuration** IT can manually configure the receiver's network via USB transfer

Once the ScreenBeam receivers appear on the CMS, users will see all receivers in the local network and will have complete control of each one.



Features

Receiver Discovery

CMS software supports multiple options for discovering receivers.

- **DNS Discovery:** Automatically connect the receivers via DNS
- **USB Configuration:** Manually configure receivers if DNS is unavailable
- **Configure Server:** Set or update the server's IP address
- **Switch Server:** Easily transition from one CMS server to another

Group Receivers

Organize receivers into groups, and manage the groups separately.

The group options are:

- Add Group
- Delete Group
- Release from Group
- Modify Group
- Join to Group
- Delete Receiver

Receiver Logs

The log feature enables IT to track and review recent activity about the receivers.

- Capture Receiver Log
- Open Log Folder
- View Warning Message

Batch Management

Enables IT to execute policy settings to multiple receivers at once.

- Deploy new updates
- Enforce a PIN
- Reboot receivers

Policy Settings

Modify policy settings for a single receiver, a designated group of receivers, or all receivers.

- **Settings**
 - Enforce PIN pairing
 - Set PIN pairing key (random/static)
 - Rename each receiver
 - Configure HDMI -VGA port power management (always on / display off / screensaver)
 - Adjust the display screen to resolve overscan issues
 - Configure static IP address using a USB thumb drive
- **Update Firmware:** Push new updates to a batch of receivers
- **Set Screensaver:** Customize the screensaver message or logo
- **Set Background Image:** Customize the background image when receiver is idle
- **Reboot:** Remotely restart a receiver if required
- **Restore to Default:** Reset the receiver to factory settings

Event Scheduler

Schedule policy settings to run at a desired time for a single receiver, a designated group of receivers, or for all receivers.

System Requirements

PC Requirements

Operating System	Windows 8.1/10 (Ultimate/Enterprise/Professional), or Windows Server (2008R2/2012/2012R2/2016/2019)
Processor	Intel Core i3 Ivy Bridge equivalent (or higher)
Memory	4 GB of RAM (or higher)
Hard disk space	250 MB (or higher)
Internet connection	For license activation and updates
USB	For USB provisioning

Network Access

Wired connection	10/100/1000-BASE-T Ethernet
Wireless connection	802.11n dual-band access point with one of the supported authentication methods; Open, Shared, WPA-Personal, WPA2-Personal, WPA2-Enterprise (802.1x) PEAP-MsCHAPv2, or EAP-TLS (up to 2048-bit certificate)
Standalone web server	For firmware updates
Network ports	7237, 7238, and 80
Optional	Internal corporate DNS server

ScreenBeam Central Management System

Industry Leader

ScreenBeam Inc., a leading wireless display and collaboration provider, delivers an app-free screen sharing experience on any modern device to bring intuitive wireless collaboration into any meeting space or classroom. ScreenBeam is Microsoft's co-engineering partner for wireless display enabling wireless Office 365 experiences.

ScreenBeam solutions are used as the validation platform for wireless display functionality by companies like Microsoft and leading PC OEM and device companies. Headquartered in Santa Clara, CA, ScreenBeam has offices across the United States, Europe and Asia.

screenbeam.com

© 2019 All rights reserved. ScreenBeam and the ScreenBeam logo are registered trademarks owned by ScreenBeam Inc. All other names are properties of their respective owners. Specifications subject to change without notice. 102119
