

# ScreenBeam Classroom Commander



## Classroom Orchestration with ScreenBeam

This Quick Start Guide provides instructions on how to install the ScreenBeam receiver, connect the teacher and student devices, and setup for deployment. Refer to our support website for the full deployment guide, latest updates, and best practices. For use with ScreenBeam 1xxx and 3xxx series wireless display receivers.

### Getting Started

Equipment required for the ScreenBeam Classroom Commander solution:

- Compatible ScreenBeam wireless display receiver
- Classroom Commander Teacher and Student apps (see download section)
- Windows 10 Miracast-enabled devices with qualified system requirements

## Before Beginning Deployment

Before deploying Actiontec ScreenBeam products, check these resources:

- For ScreenBeam receiver deployment guide, firmware upgrades, and release notes, go to: <https://support.screenbeam.com/sbcc>
- For ScreenBeam Central Management System (CMS) software, go to: <https://support.screenbeam.com/cms>
- For Open Source information, go to: <https://opensource.actiontec.com>

## License and Activation

- If you have a unit labeled as “Classroom Commander Demo Unit”, it should be pre-activated with a full license and you may proceed to the next section.
- If you purchased a license, you should have received the license serial key and information via email from [sblicense@actiontec.com](mailto:sblicense@actiontec.com). Please contact your sales rep or visit <http://license.screenbeam.com/sbcc> to request a license.
- To activate the ScreenBeam Classroom Commander license on the receiver, you can choose one of the following options:

### License Activation Utility

- Suggested for manually activating a small number of units. This Windows application requires direct Miracast connection to the receiver.
- Utility and instructions are available in the Software section at <http://support.screenbeam.com/sbcc>.

### ScreenBeam CMS v2.6 (or later)

- Recommended for remotely activating a larger fleet of units, or units that are already remotely managed.
- Latest CMS software is available in the Zendesk CMS section, or at <http://support.screenbeam.com/cms>.

## Basic License Information

- License activation is not required to use ScreenBeam Classroom Commander in demo mode.
- Non-activated ScreenBeam receiver can support only one teacher and two student PCs at a time.
- Licenses start on the date the first receiver is activated, or 90 days from issuance of the license key, whichever comes first.
- Active licenses will be entitled to feature and maintenance updates for one year.

## Documentation

For FAQs, troubleshooting tips and support, visit:  
<https://support.screenbeam.com/sbcc>

## Need Help?

To open a ticket for support, visit:  
<https://support.screenbeam.com/ticket>

## System Requirements

### RECOMMENDED

---

#### Teacher Device

OS	Windows 10 Pro/Edu/Ent/S (64-bit) <sup>1</sup>
CPU	Fourth generation Intel Core i5 or better
Wireless	Intel dual-band wireless AC 726x or better <sup>2</sup>
Memory	8 GB or more
HD Space	300 MB or more

#### Student Device

OS	Windows 10 Pro/Edu/Ent/S (64-bit) <sup>1</sup>
CPU	Intel Celeron N3060 or better
Wireless	Intel dual-band wireless AC 726x or better <sup>2</sup>
Memory	4 GB or more
HD Space	300 MB or more

## MINIMUM

---

### Teacher Device

OS	Windows 10 Pro/Edu/Ent/S (64-bit) <sup>1</sup>
CPU	Fourth generation Intel Core i3 or AMD equivalent
Wireless	802.11AC dual-band 2x2 <sup>2</sup>
Memory	4 GB
HD Space	150 MB

### Student Device

OS	Windows 10 Pro/Edu/Ent/S (64-bit) <sup>1</sup>
CPU	Intel Celeron N3010 or AMD equivalent
Wireless	802.11AC dual-band 1x1 <sup>2</sup>
Memory	2 GB
HD Space	150 MB

### Important!

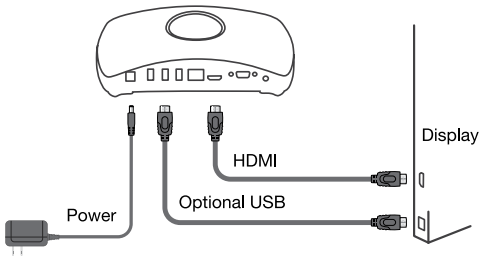
We highly recommend that your Windows devices meet the system requirements for an optimal experience.

## A Connect Receiver to Display

1. Verify ScreenBeam receiver is connected and turned on.
2. Refer to the applicable receiver's *Quick Start Guide* for setup instructions.

**NOTE:** You may proceed to the next section if the ScreenBeam receiver is already installed.

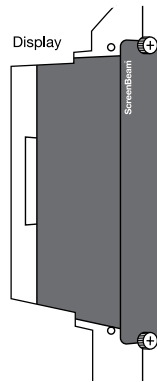
### ScreenBeam 1xxx Wireless Display Receiver



**Figure 1** Connection guide for 1xxx series receivers

### ScreenBeam 3xxx Wireless Display Receiver

**Figure 2** Connection guide  
for 3xxx series receivers



## **B** Enable Classroom Commander

ScreenBeam supports single and multi-client connection with single as the default setting. Follow the instructions below to enable multi-client connection for Classroom Commander.

1. Access the local management interface or use ScreenBeam CMS (Refer to section G for details on how to manage ScreenBeam receivers.)
2. Go to **Features**
3. Under **Wireless display** mode, select **Commander** mode
4. Apply setting (the receiver may require a reboot)

## **C** Download Classroom Commander Apps

ScreenBeam Classroom Commander teacher and student apps are free for download and available in both (MSI) Installer and (UWP) app formats.

Visit <http://support.screenbeam.com/sbcc> to obtain the Classroom Commander App.



## D Install and Launch Classroom Commander

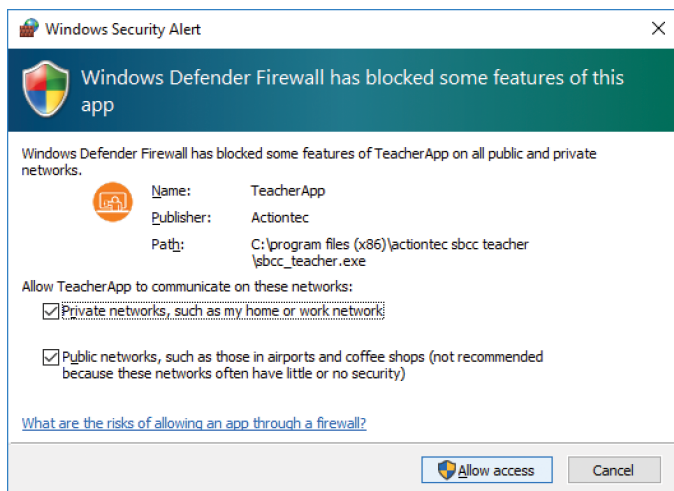
For the teacher's PC, select the **Classroom Commander Teacher** app or package to install.

For the student PCs, select the **Classroom Commander Student** app or package to install.

### Important!

When encountering the Windows Defender Firewall security alert notice, you must check both **Private networks** and **Public networks**, and select **Allow access** for application to work. This applies to both teacher and student PCs.

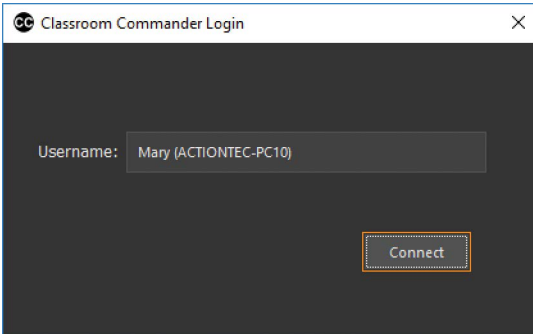
**Note:** App installation requires administrative privilege on the teacher and students PCs.



## E Connect Teacher PC and Use Teacher App

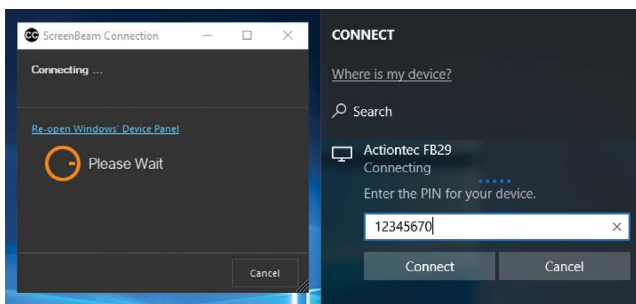
The *User Manual* provides more details on ScreenBeam Classroom Commander features. It can be found at <https://support.screenbeam.com/sbcc> in the **Product Documentation** section.

1. On the teacher PC, launch the **Classroom Commander Teacher** app.
2. You will be prompted with a login dialog to connect. The username is a combination of “**system user name**” + “**computer name**.”

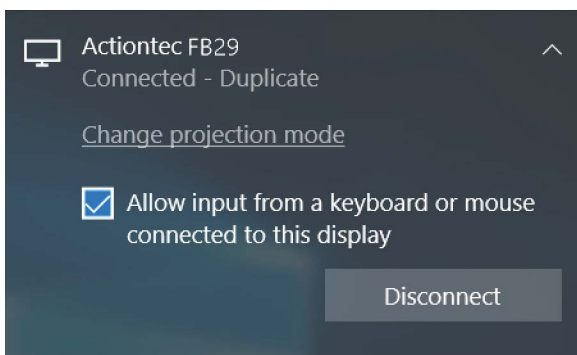


3. Select **Connect** to start the connection with the receiver.
4. Connect will launch a **Windows Connect** menu and display available receiver(s).

5. On the **Connect** menu, select the appropriate receiver.
6. You will be prompted to enter a PIN number.

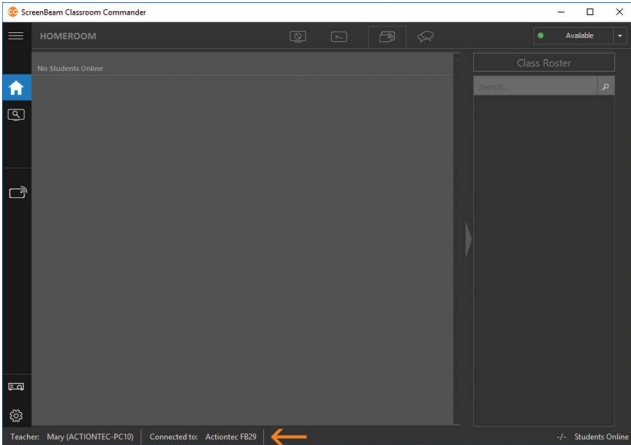


7. **(Optional)** If the receiver is connected to an interactive touch display or projector, you must select the checkbox for **Allow mouse, keyboard, touch and pen input from this device** for touch to work.

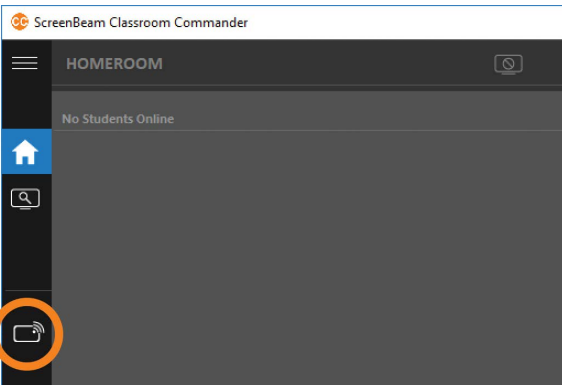


# quick start guide

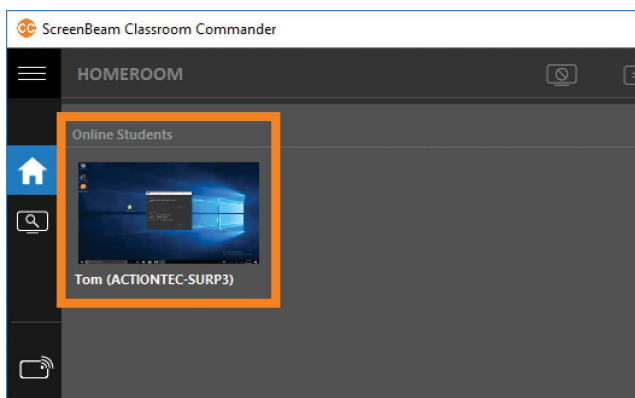
8. Once the connection is established, the display panel will show **Ready to Present**, and the teacher app console will show the system has connected to the receiver.



9. Users must select the **Beam** icon to project. This step ensures screen privacy by requiring the presenter to project only when ready. To stop projecting, select the **Beam** icon again.

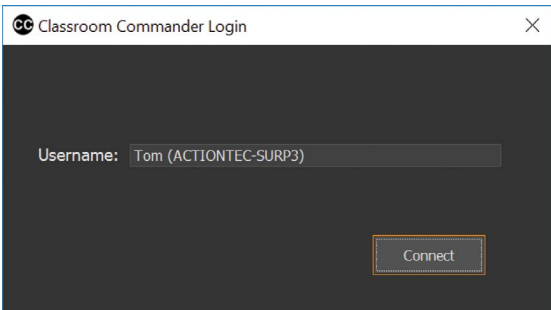


- The Homeroom screen will remain empty until a student PC with the ScreenBeam Classroom Commander student app is connected to the same receiver. Once a student PC is connected, the student PC desktop will appear as a thumbnail on the homeroom screen.

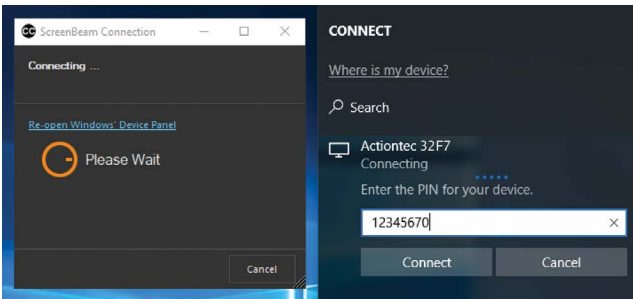


## F Connect Student PC with Student App

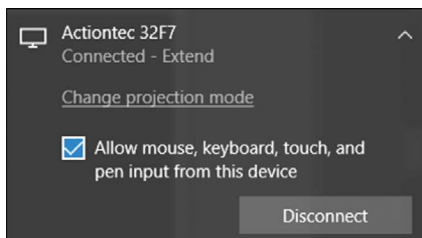
1. On a student PC, launch the **Classroom Commander Student** app.
2. You will be prompted with a login dialog to connect. The username is a combination of “**system user name**” + “**computer name.**”



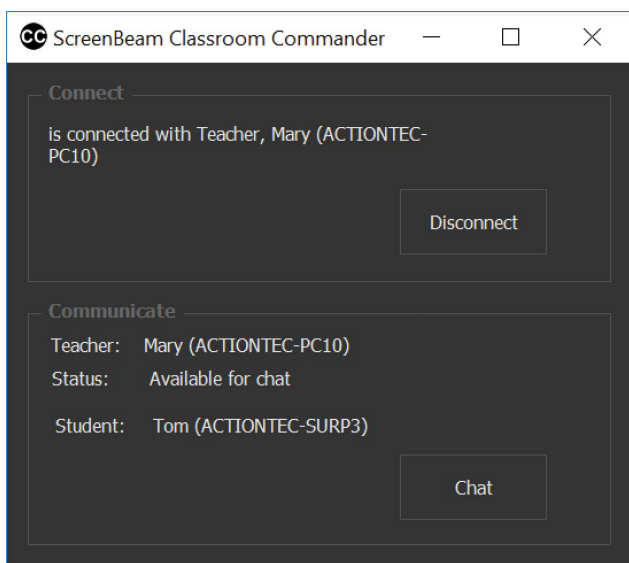
3. Select **Connect** to start the connection with the receiver.
4. Connect will launch a **Windows Connect** menu and display available receiver(s).
5. On the **Connect** menu, select the appropriate receiver.
6. You will be prompted to enter a PIN number.



- (Optional)** If the receiver is connected to an interactive touch display or projector, you must select the checkbox for **Allow mouse, keyboard, touch and pen input from this device** for touch to work.



- Once the connection is established, the display panel will show the student PC is connected.



- You can minimize the student app and it will hide in the Windows system tray.

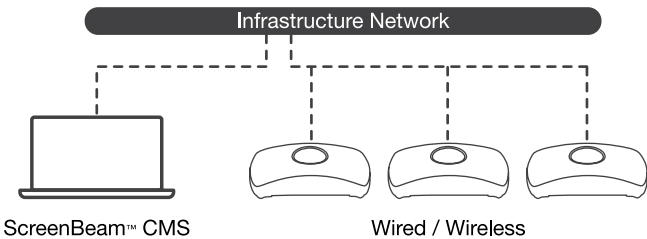
## **G** Configure ScreenBeam Receiver

The ScreenBeam wireless display receiver can be configured by using the ScreenBeam CMS software or accessing the ScreenBeam's local management interface (LMI).

### Using ScreenBeam CMS Software

ScreenBeam Central Management System (CMS) is a highly recommended complimentary tool for multi-unit deployment, configuration and administration.

- 1 To obtain CMS software and the *CMS User Guide*, go to: <https://support.screenbeam.com/cms>.
- 2 Refer to the *CMS User Guide* for setup instructions.



**Figure 3** Receivers managed by ScreenBeam CMS

### Using Local Management on ScreenBeam

The Local Management Interface can configure and update a single ScreenBeam. LMI is not needed when using ScreenBeam CMS.

### Accessing the ScreenBeam LMI

Two methods exist to access the LMI.



## Method 1: Network Connection via DHCP

- 1 Using a shielded RJ-45-terminated Cat5e or better Ethernet cable, connect the ScreenBeam Ethernet port to a DHCP-enabled network.
- 2 The Ready to Connect screen on the display will show the assigned IP address of the ScreenBeam. Enter this address into the web browser of a PC on the same network as the ScreenBeam.
- 3 The browser may give an error stating “The connection or site is not secure or private.” Manually accept the connection as follows:
  - **Chrome browser:** click **Advanced**, then click **Proceed**.
  - **Edge/IE browser:** click **Details**, then **Go on to the web page** (not recommended).
  - **Firefox browser:** click **Advanced**, then click **Add Exception**, then click **Confirm Security Exception**.
- 4 When the ScreenBeam management page appears, enter the Username **Administrator** and Password **Actiontec** (both are case-sensitive).
- 5 Click **Login**, and the Device Configuration page appears.

## Method 2: Wireless P2P Direct Connection

- 1 Using a Windows 10 device, connect the device to the ScreenBeam per the instructions provided in the QSG for the ScreenBeam receiver.
- 2 Once connected, use a web browser and enter <https://192.168.16.1> to access the LMI.
- 3 Follow the directions from Method 1 from Step 3 on.

**Note:** Section H provides the necessary configurations and customizations for deployment.

## H Customize ScreenBeam Settings

### Under the Device Configuration Page

#### Assign new Device Name

- 1 From the **Device Name Access** option, select **Enable**.
- 2 Select the **Device Name** text box, then enter a new name (example: Conference TV).

**Note:** Each receiver should have a unique name; this makes it easier for users to identify and connect to the correct display. Supported naming characters are A-Z, a-z, 0-9, -, \_.

- 3 Select **Apply/Save**.

#### Change the Administrator's Password

- 1 Select the **Administrator Password** text box and enter the new password.
- 2 Select **Apply/Save** button to save any changes.

### Under the Features Page

#### Configure Force PIN Pairing Option

By default, the Force PIN Pairing option is Enabled. To change the PIN pairing type or PIN code:

- 1 Select either **ON** to force PIN or **OFF** to *not* force PIN upon connection.
- 2 If Force PIN Pairing is **ON**, select either **Each connection** or **First connection only**.
- 3 Select **Random** or **Static** for PIN code generation.
- 4 If **Static**, then enter PIN of choice. Keep note of the new PIN for user distribution.
- 5 Select **Apply/Save** button to save any changes.

## Configure HDMI/VGA Port Power Management

By default, ScreenBeam is designed to display the Ready to Connect screen continuously. To extend display life and/or reduce power consumption:

- 1 Select either **Screen Saver** or **Display Off**.
- 2 Enter a desired time for setting to take effect.
- 3 **Optional:** Select a Wake up mode.
- 4 Select **Apply/Save** button to save any changes.

## I Documentation and Support

### Documentation

Manual, firmware, release notes, and FAQs:

<https://support.screenbeam.com/sbcc>

For more information on the product and solution:

[www.screenbeam.com/products/  
screenbeam-classroom-commander/](http://www.screenbeam.com/products/screenbeam-classroom-commander/)

### Licensing Information

For question about ScreenBeam Classroom Commander license or license purchase, please visit <http://license.screenbeam.com/sbcc> or email [sblicense@actiontec.com](mailto:sblicense@actiontec.com).

If you have an evaluation unit, please contact your sales representative for support.

### Support Information

For FAQs, troubleshooting tips and support, visit:

<https://support.screenbeam.com/sbcc>

To open a ticket for support, visit:

<https://support.screenbeam.com/ticket>

Website: [www.screenbeam.com](http://www.screenbeam.com)

*Actiontec*® | **ScreenBeam**™

PN: 0530-0845-001

© 2019 All rights reserved. Actiontec and the Actiontec logo are registered trademarks, and ScreenBeam is a trademark of Actiontec Electronics, Inc. All other names are properties of their respective owners. Specifications subject to change without notice.  
052919